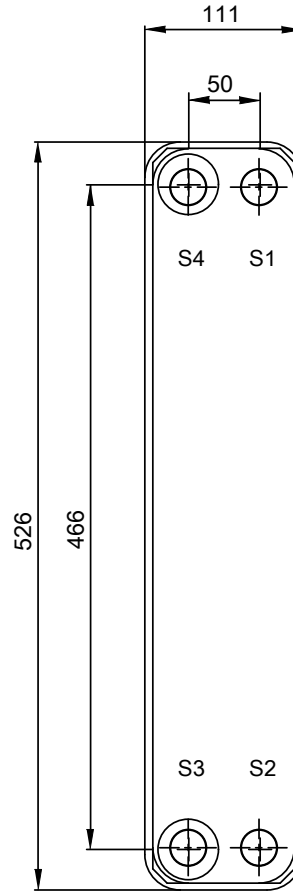
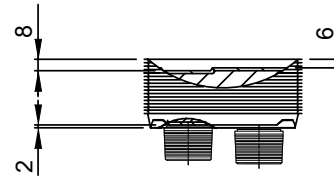
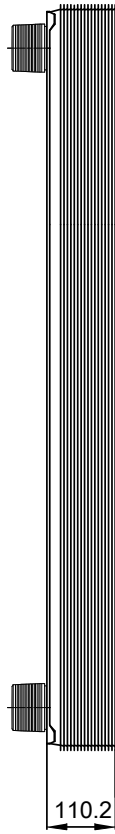
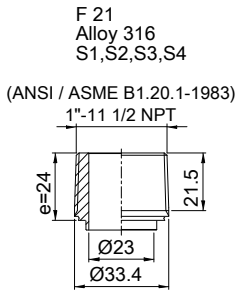


Note that all unique customer requirements (i.e tolerance) need to be verified thru Alfa Laval.



Frameplate is depressed 2 mm at connection S3/S4
Pressureplate is depressed 2 mm / even number of channel plates
at connections T3/T4 / uneven number of channel plates at
connections T1/T2.

HEATING SURFACE
NETWEIGHT 10.8 kg
OPERATING WEIGHT kg
PLATE MATERIAL ALLOY 316
PLATE GROUPING 1*19H/1*20H

T1 T2 T3 T4 locations on back side
correspond to S1 S2 S3 S4 on front side

ALL DIMENSIONS IN MILLIMETERS

SIDE	MEDIA	INLET	TEMP.	OUTLET	TEMP.	FLOW RATE	PRESSURE DROP	LIQUID VOL.
1								1.9 dm ³
2								1.81 dm ³

PRESSURE VESSEL APPROVAL

PED/UK/CRN



AlfaNova 52-40H (3287000898)

www.alfalaval.com

CUSTOMER NAME / REF. NO.

TOTAL LENGTH 134.2 mm
TOTAL WIDTH 111.0 mm
TOTAL HEIGHT 526.0 mm

COMPANY / REF.



1/24/2023
REV 0