

*bidirectional 2/2 solenoid valve block for
H2 storage management up to 500 barg
working pressure*

MV-H2-2/2-bidir-500

MV-H2-2/2-bidir-300



The solenoid valve block MV-H2-2/2 bidir-300/500 was designed for compact straight forward, economic flow control. It handles input and output of Hydrogen high pressure storage tanks up to working pressure of 300 / 500 barg.

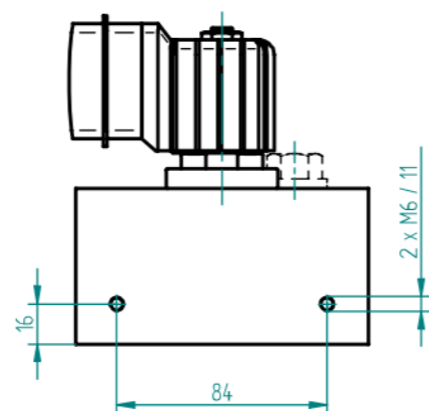
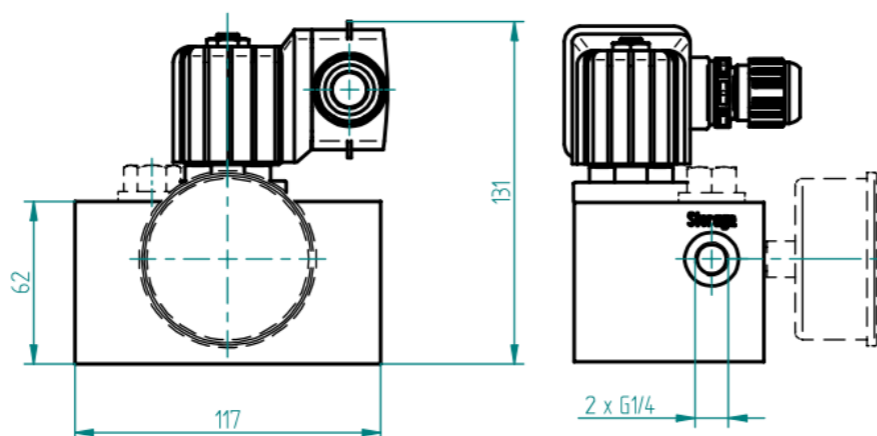
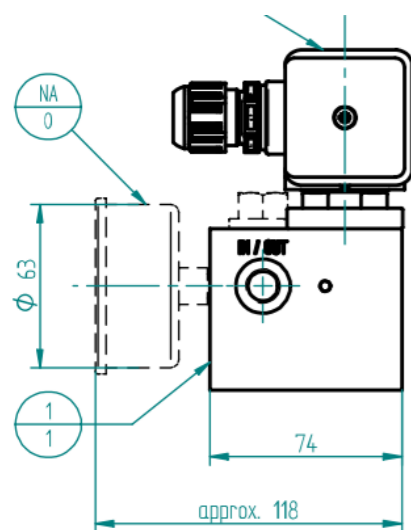
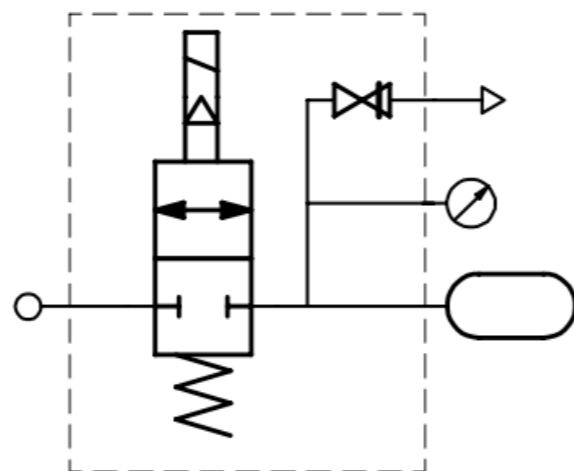
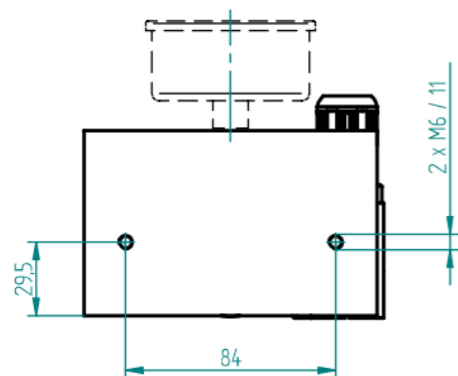
The chemically nickel plated valve block is 100% corrosion resistant and optimized for the reliable management of Hydrogen storage and cascade refuelling systems etc.

An integrated certified REMBE® high pressure rupture disc (fail-safe performance) with negative temperature coefficient guarantees safety even in case of overpressure and fire.

An analog stainless steel pressure gauge allows a fast tool-free pressure check.

Dimensions Overall: WxDxH: 117x118x131 mm3

Schematics



Specifications

Valve	
Valve Type	Solenoid, Normally Closed, Bidirectional
Working Pressure Max.	500 barg / 300 barg
Testing Pressure	750 barg
Bursting Pressure (Valve)	>1500 barg
Outlet Diameter	DN 4 mm
Volume Flow Max.	Kv = 0.3 m ³ /h
Operating Temperature Range	-40 to +80°C
Medium	Dry Hydrogen
Mounting Position	Any Position
Optimal Use:	With Home Power Gas Control and Managing Block
Inlet / Outlet	G1/4" DIN/ISO 228-1
Storage	G1/4" DIN/ISO 228-1
Sealing	Stainless Steel Viton Ring (optional)
Block Material	Aluminium, Chemically Nickel Plated
REMBE® High Pressure Rupture Disc	625 barg or 440 barg at 20°C (mounted)
Solenoid	
Type of protection	II 2G Ex e mb IIC T4 Gb
EC-type examination	PTB 11 ATEX 2027 X
Permissible ambient temp.	- 40 ... + 60°C
Nominal Power consumpt	11 W @ 20°C
Protection class	IP 65
Volage and type of current	24 V DC
Electrical connection	Terminal box / cable Ø 7 to 13 mm



SWISS  MADE

HOME POWER
an INNOTEST AG enterprise



*Innotest AG
Homepower
Hilagstrasse 24
8360 Eschlikon
Switzerland*

*phone +41 71 980 09 90
info@homepower.ch
www.homepower.ch*

en
2021 Sept