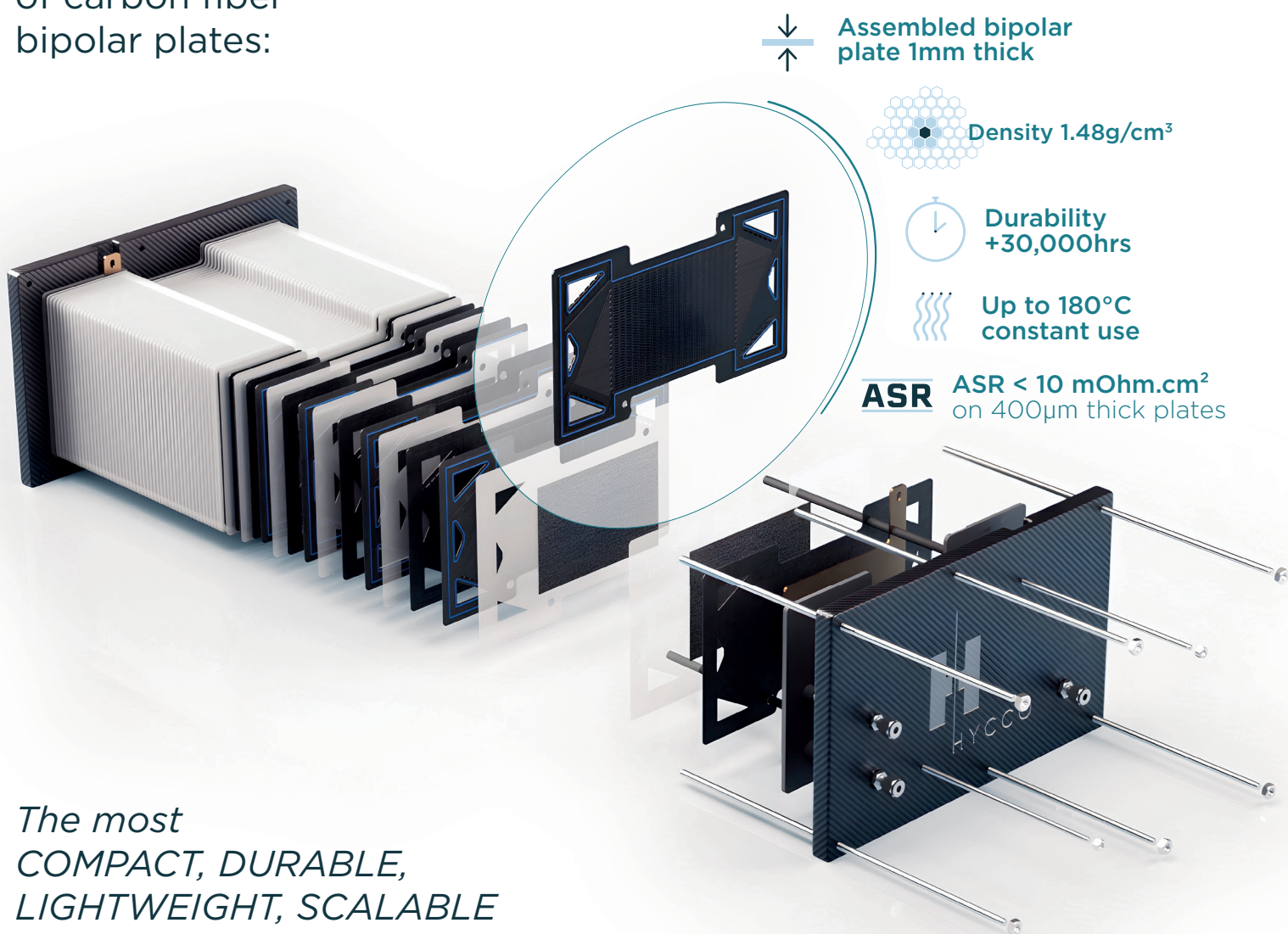


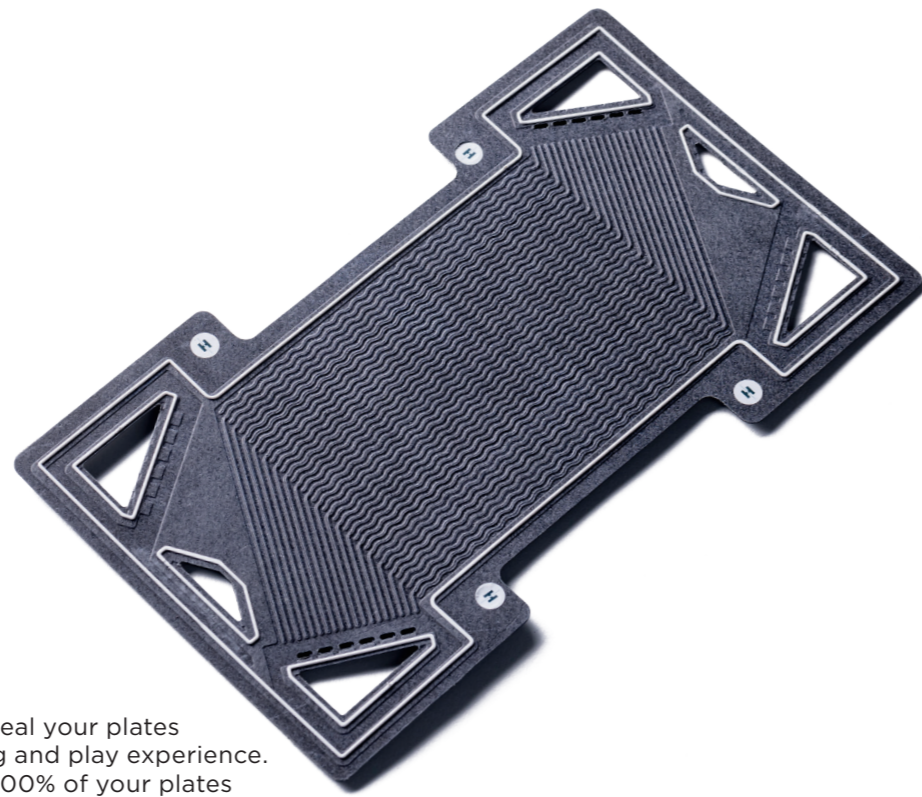
TOGETHER, EMPOWERING THE FUTURE

We produce
the next generation
of carbon fiber
bipolar plates:



*The most
COMPACT, DURABLE,
LIGHTWEIGHT, SCALABLE
bipolar plates available
on the market*

Our expertises



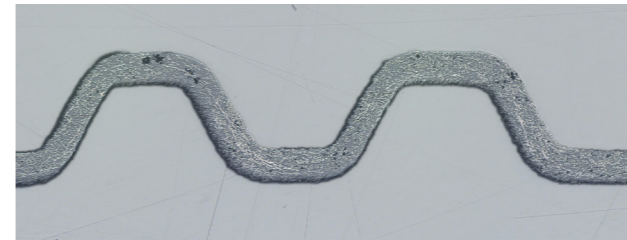
- An experienced team at your service**
 Our 18-strong team is there to assist you, from plate design to the integration of our components into your system.
- A flexible production line**
 From prototyping to industrialization, we have the means to deliver your plates on time.
- Assembly**
 Over the years, we have qualified several adhesives compatible with the LT-PEMFC application. Special qualification of glue can be done internally to match the electro-chemistry of your application.

- Gaskets**
 We can seal your plates for a plug and play experience. We test 100% of your plates so there's no surprise when it comes to stacking your fuel cell.
- Design**
 Our team has extensive knowledge of our materials, and how to shape them. We can help you through design guide lines, but we can also offer a complete design of your plate (CAD + CFD) if you prefer to stay focused at integration level.
- Fuel cell performance testing and ageing test**
 We are fully equipped to realize LT and HT-PEMFC performance test on short stack (<2kW)
- Rapid prototyping**
 Mold and tools can be realised internally to minimize the number of iterations between prototyping, and production.

Our material: a unique carbon fiber technology

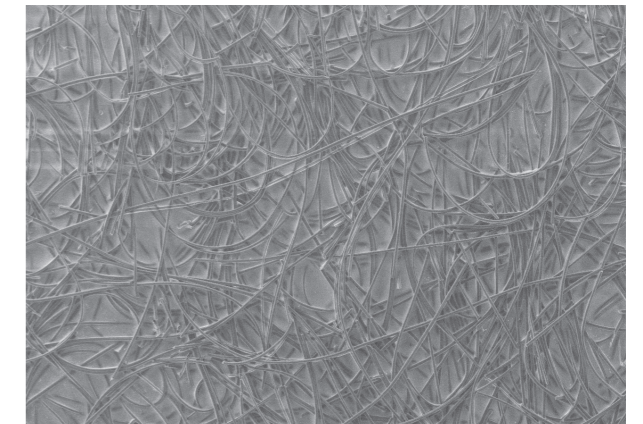


- Material formulation**
 We support you by formulating specific composite materials according to your needs (electrical conductivity, electrochemical compatibility), down to 100µm thickness.

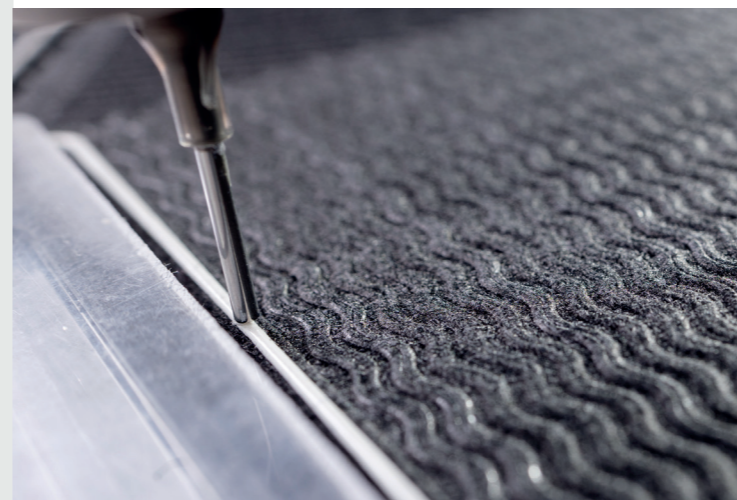


- Formability**
 Our technology is a blend of long carbon fibers and high performance thermoplastics, creating outstanding mechanical properties even for very thin plates, with metal-like plate design.

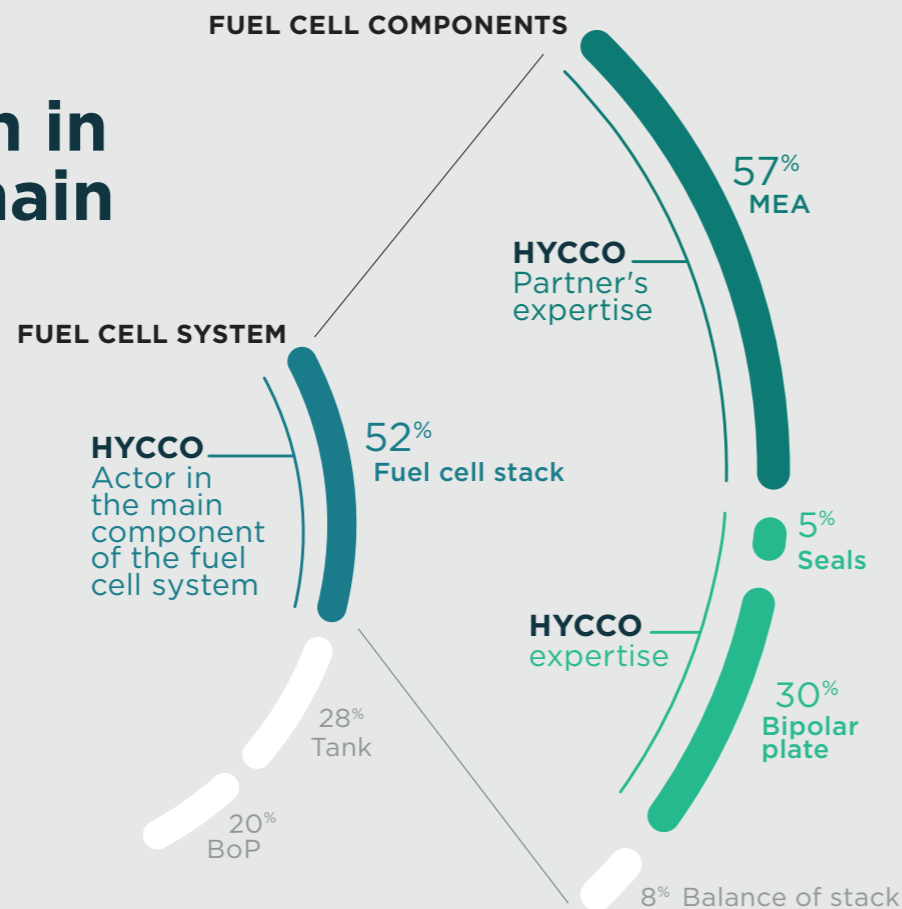
- Manufacturing process**
 Plates are manufactured by thermocompression. No skin effect, and no post-treatment is required. The carbon fibers are fully exposed at the surface of the plate, enabling direct electrical conductivity path from the top to the bottom of the plate.



- Plug & play product for easy integration**
 Depending of your requirements, we can supply half plates, bonded plates, sealed plates, or any of the above for a direct integration into your fuel cell stack. 100% of our plates are qualified before shipping.

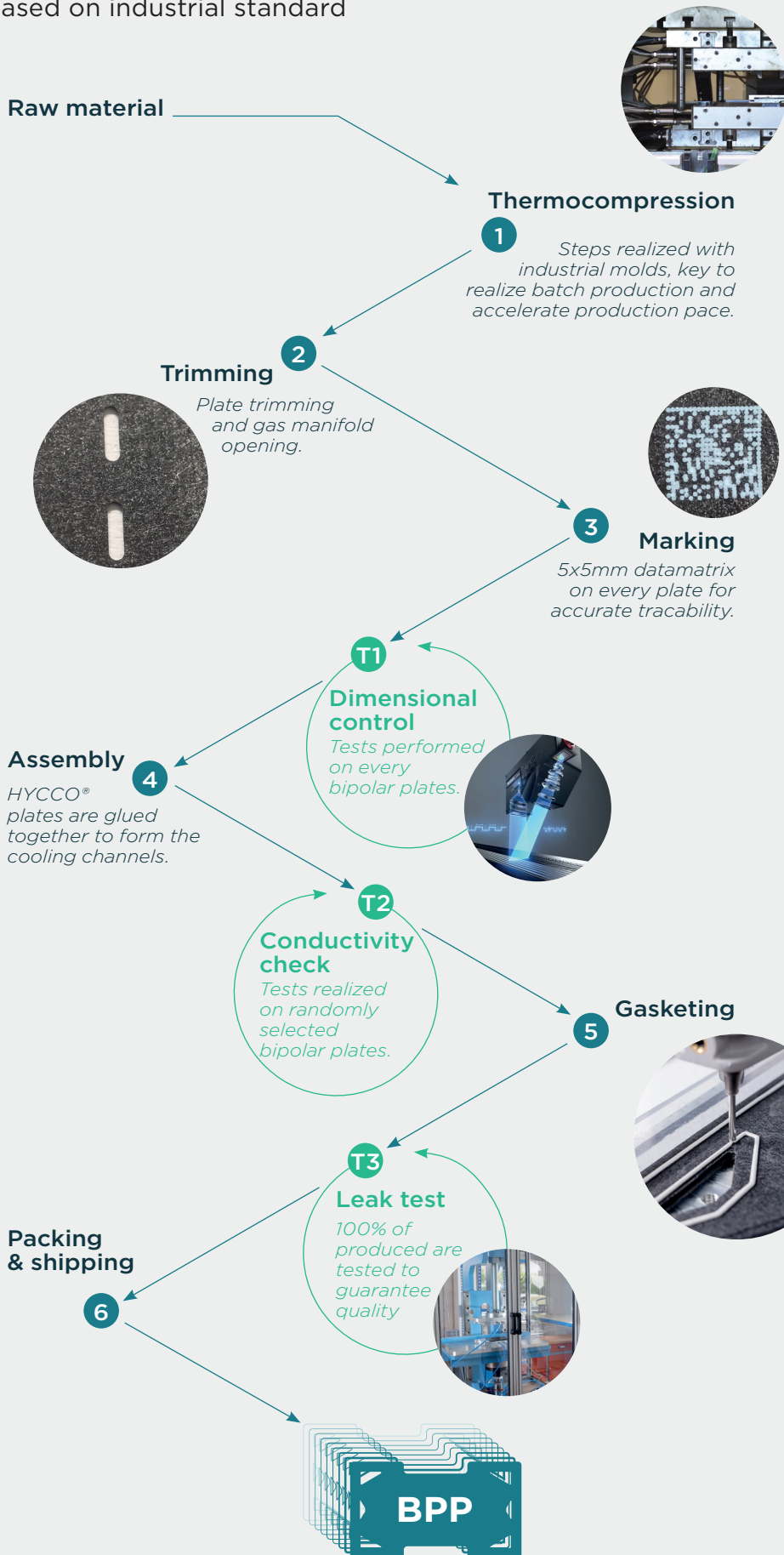


Our position in the value chain

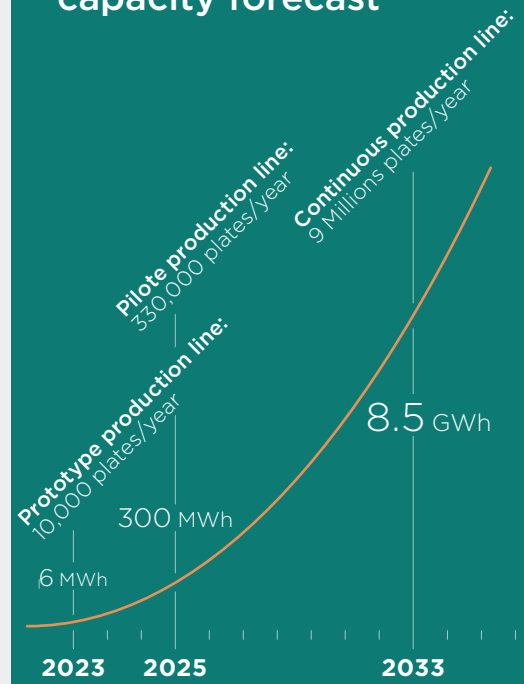


Our production line

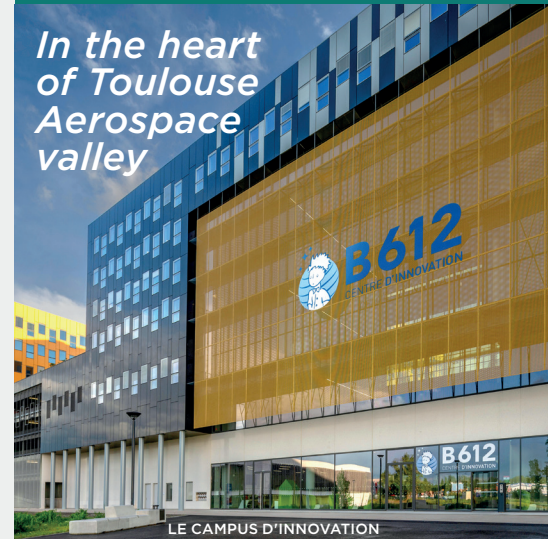
We build our production process based on industrial standard



Our production capacity forecast



In the heart of Toulouse Aerospace valley



Contact

+33 (0)6 67 93 41 01
contact@hycco.fr

3 av. Didier Daurat,
31 400 Toulouse
France

hycco.fr

