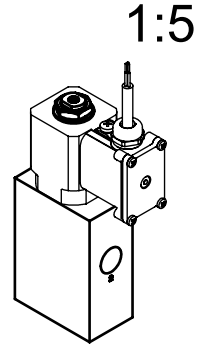
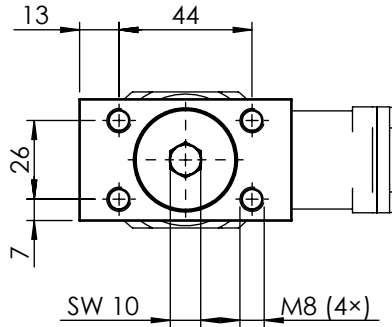


# 2/2-way solenoid valve

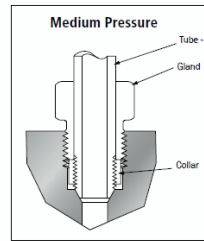
pilot operated with own fluid

Group	H2DI	Symbol		Type	3106 B		
Remarks				DN	Solenoid size	Manual control	
				6	2	none	
				Function	Drawn solenoid	Weight without solenoid	
				NC	86		

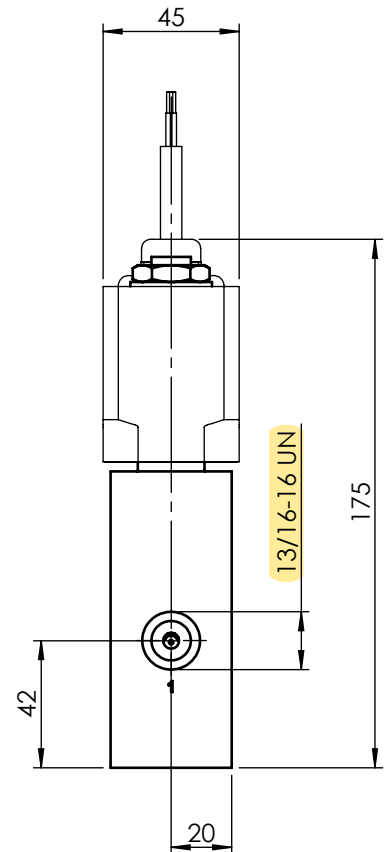
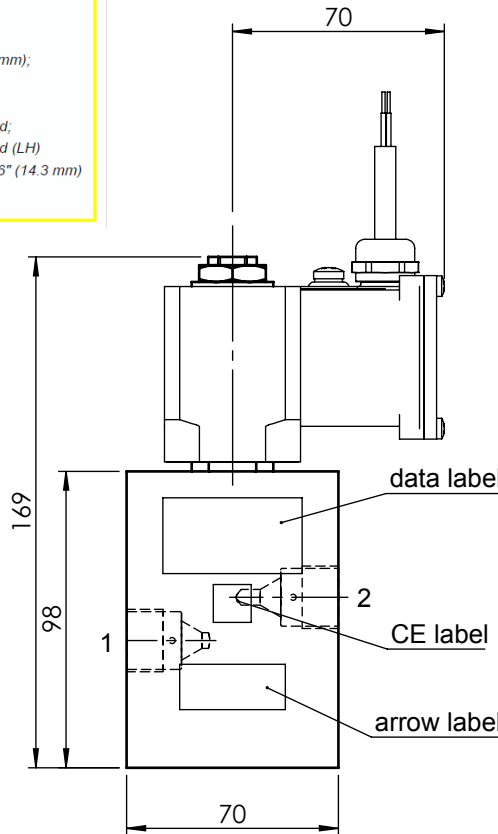
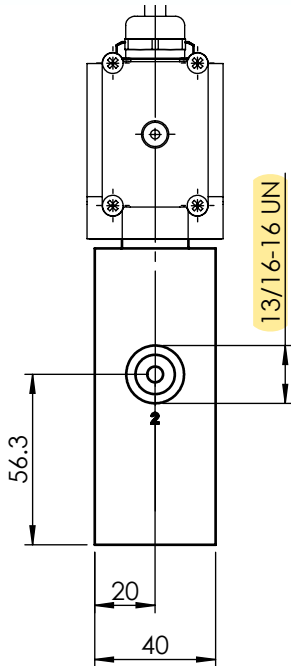
DN [mm]	Kv [m³/h]	Pressure gas [MPa]
6	0.663	1 ... 100 (10 ... 1000 bar)
	Cv [US-gal/min]	psi [lbf/in²]
	0.774	145 ... 14504



**Connection thread: 13/16-16 UN – Medium Pressure C/T-connection**



**Medium Pressure Coned-and-Threaded - Fittings and Tubing:**  
 Tube Size:  
 Outside Diameter: 9/16" (14.3 mm);  
 Inside Diameter: 7.9 mm  
 Fitting:  
 Gland with 13/16-16 UN-Thread;  
 Collar with 9/16-18 UNF-Thread (LH)  
 for Tube Outside Diameter 9/16" (14.3 mm)



## Layout

3D ID: 283.991.00

Selection sheet	-	Status	<b>Tech.Dok. - In Arbeit</b>			Drawn	10.11.2020	mgubelmann	
Drawing class	G-DGRL-H	Revision	00	Version	01	Checked			
Scale	1:2.5	Modified	16.11.2020		mgubelmann	Size	Drawing-/Part-No.		
Sheet	1 of 1	Administration	11.11.2020		mgubelmann	4	283.992.02	Language	en

Dimensions are in millimeters, unless otherwise specified.

Subject to dimensional or design modification

Copyright on this drawing remains in our company

dism-verfil-rb-en