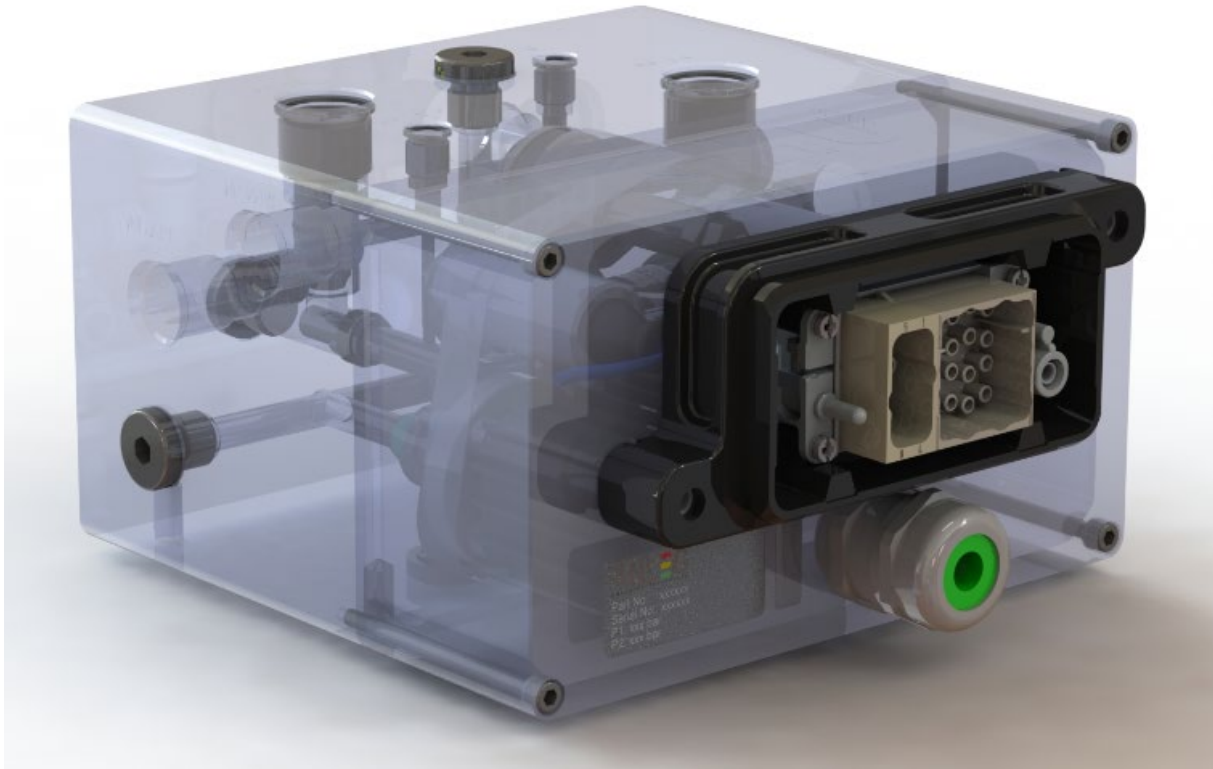


HP GHU 500 (High Pressure Gas Handling Unit)



Main technical features

- ▶ **Nominal pressure P1** 350/500 barg
- ▶ **Minimal pressure P1** 20 barg
- ▶ **Maximal pressure P1** 500 barg
- ▶ **Outlet pressures P2** 7-13 barg
- ▶ **Flow rate** 2.8 – 5.5 g/s
- ▶ **Temperature transmitters**
- ▶ **Pressure transmitters** HP/LP
*optional

Gas Handling Unit (GHU) for a Hydrogen gas particularly in the range from 20 bar to 350 bar, Gas handling unit being characterized in that the Pressure Regulating device, Particularly the Pressure Regulating valve, The overpressure safety unit, Temp. sensor and The low pressure and high pressure measuring device form a structural unit and are particularly accommodated in a common housing, Where in the common housing is designed as a single part or a plurality of parts and the gas handling unit is divided into a high pressure section and a low pressure section.

Technical specifications

Description

Nominal pressure P1	350/500 barg		
Minimal pressure P1	20 barg		
Maximal pressure P1	500 barg		
Outlet pressure P2	7-10 barg	10-13 bar	Customizable on request (4 barg tolerance)
Medium	Hydrogen H ₂		
Flow rates	2.8 g/s	4.2 g/s	5.5 g/s
Weight	~16 kg		
Housing material	Stainless Steel 1.4435 (316L)		

Equipment

Temperature transmitters	NTC 90-205, PT100, PT1000...		
Pressure transmitters HP	0-690 bar, 0.5 to 4.5V, 4 to 20mA		
Pressure transmitter LP	0-20 bar, 0.5 to 4.5V, 4 to 20mA		

Connections

Inlet port P1	3/4" - 16 UNF		
LP Venting port	3/4" - 16 UNF		
HP Venting port	3/4" - 16 UNF		
Outlet port P2	3/4" - 16 UNF		
Electrical connection	Harting HAN 10HPR		
Electrical pin amount	24		28

Certificate

EC 79 7 R 134, DNVGL, ADR
2000, TPED
*optional

Overall dimensions

