

HXS-2

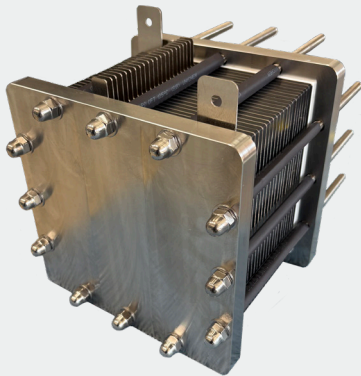
AEMWE stack

Specifications

H₂ Production rate	500 L h ⁻¹	Dimensions	190 x 210 x 215 mm
Efficiency (HHV)	82% (BOL, beginning of life)	Weight	19 kg
Operating condition	0.3 M KOH, 60 °C	Electrodes	HXP-an, HXP-ca
Power consumption	~2.1 kW	Membrane	Polymer electrolyte
Water consumption	420 mL h ⁻¹ (50 A operation)	Other	Dry-cathode, 2400 sccm

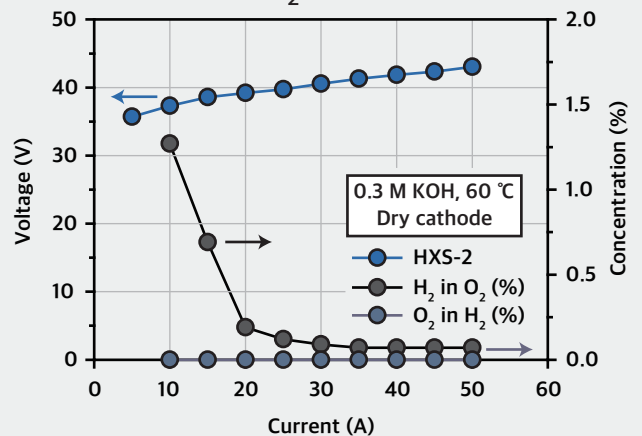
Properties

Optical image



- High performance
- High durability
- Dry-Cathode
- High-pressure H₂ production
- High-purity H₂ production
- Fast load response
- Reusable hardware

Performance, H₂ concentration



BOP System Guide

