

HXP-ca

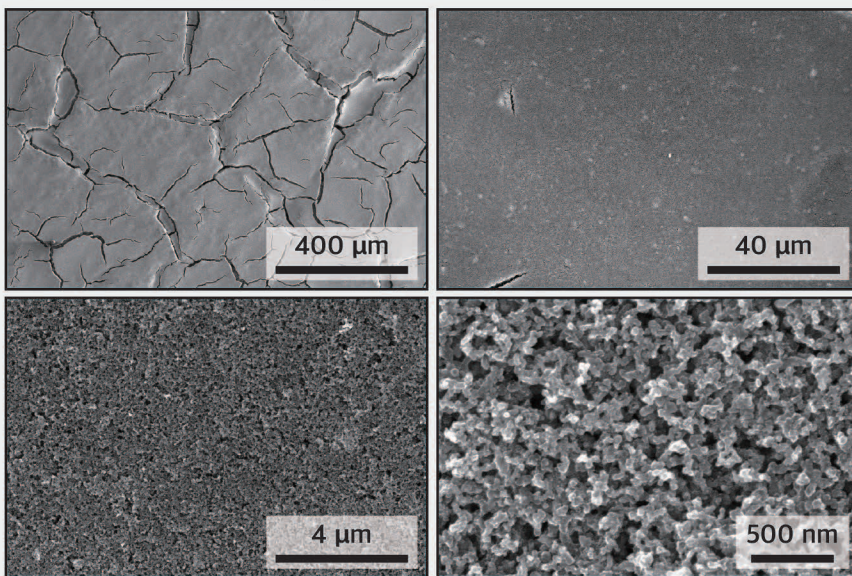
AEMWE cathode

Specifications

Materials	Pt/C + binder (Catalyst layer), Carbon paper (Gas diffusion layer)
Catalyst loading	0.2 mg _{Pt} cm ⁻² (Measured by XRF)
Thickness	260 ± 20 μm
Area density	105 ± 10 g m ⁻²
Dimensions	Length < 300 mm, Width < 200 mm

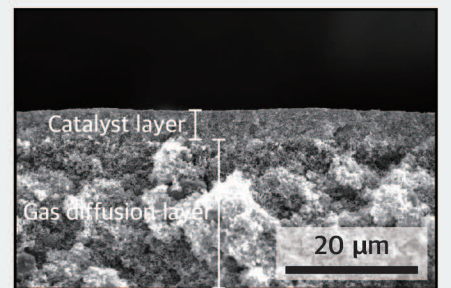
Properties

Surface morphologies

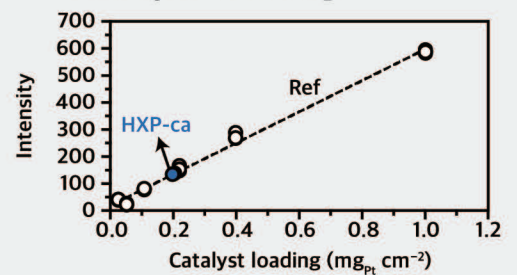


*Homogeneous ionomer distribution
*Uniform pore structure

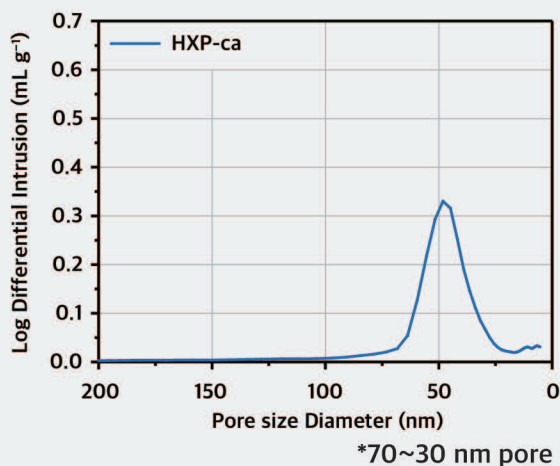
Cross-section



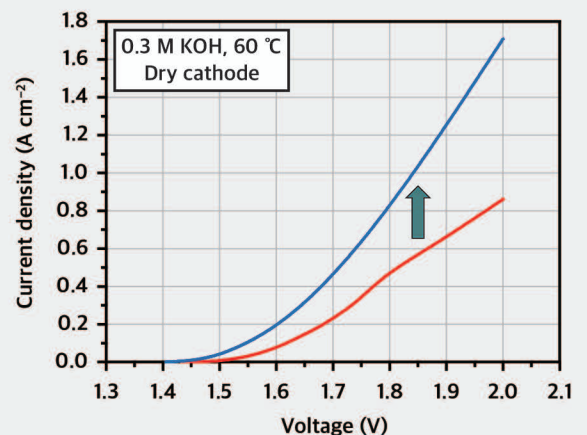
Catalyst loading



Pore structure



Impact of Cathode in AEMWEs



*Cathode design is crucial in dry cathode operation