

HXP-an

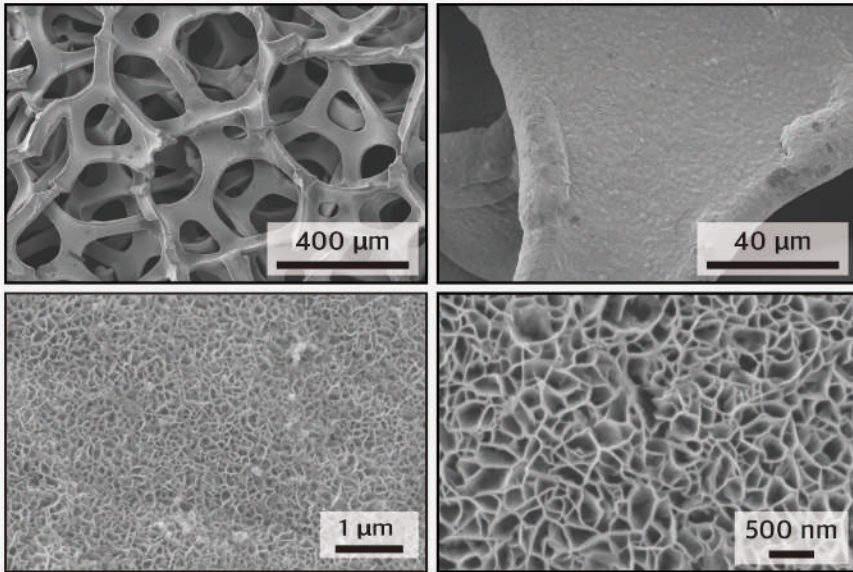
AEMWE anode

Specifications

Materials	1. Ni (Ni Foam), 2. Ni-Fe alloy (Ni-Fe Foam)
Pore size	130 ppi (pore per inch)
Porosity	95 ~ 98%
Thickness	0.1 ~ 35 mm
Dimensions	Length < 1000 mm, Width < 500 mm

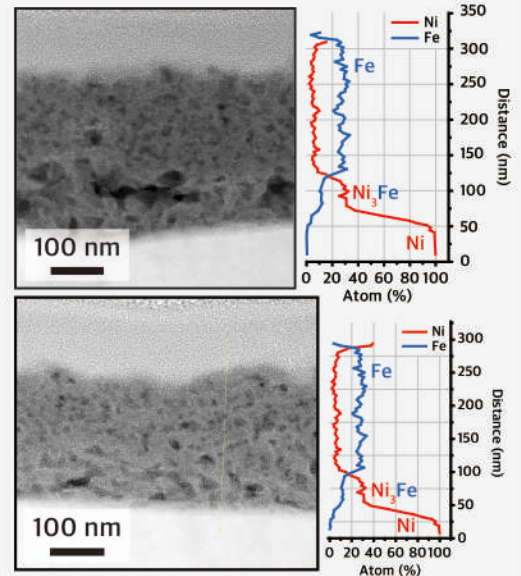
Properties

Surface morphologies



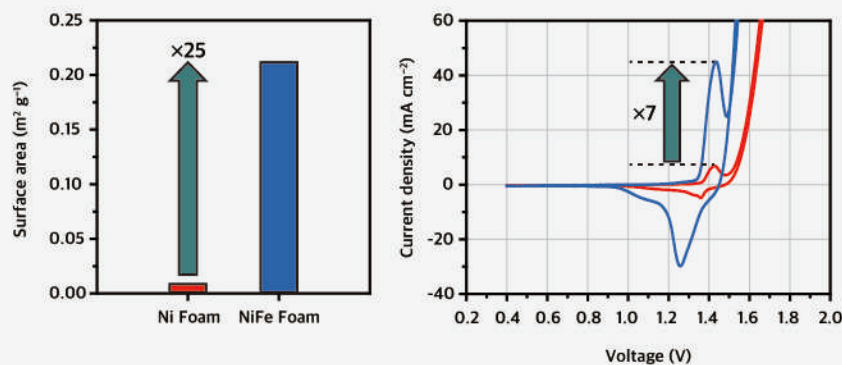
*Large electrochemical surface area

Cross-section

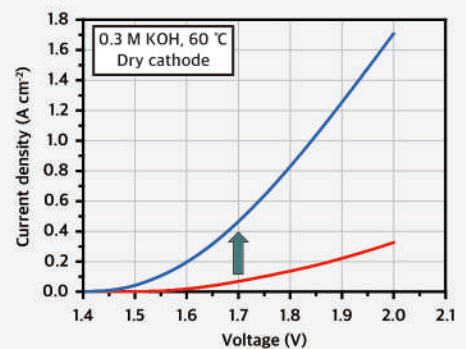


*Fast OER kinetics

Maximizing Surface Area



Impact of Anode in AEMWEs



*Anode design is crucial at low current regime