

# Enclosed Discharge Safety Relief Valves

Seetru Limited

for compressed air or gases

Safety valves made with a Brass or Stainless Steel body and Stainless Steel inlets <  
Enclosed discharge valve with threaded connections <  
Elastomer rubber sealing <

## Type 33110 / 34110 / 34410

### Example Applications

- Air / gas compressors
- Pressure vessels
- Pneumatic systems
- Medical gases/Technical gases
- Hydrogen (with 316 stainless steel inlet)

### Specifications

- Inlet connections: 3/8" to 1/2" threaded inlet connections
- Temperature range: -40°C to +200°C (depending on body rubber seal material)
- Pressure range: 27 to 36 & 48.3 to 241.3 bar

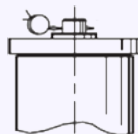
### Materials of Construction

Component	Valve Type	Material	Grade
Inlet	33110	Stainless Steel	303
	34110	Stainless Steel	303
	34410	Stainless Steel	316
Body	33110	Brass	CZ122
	34110	Stainless Steel	316
	34410	Stainless Steel	316
Spring	All	Stainless Steel	302

Drawing showing all component materials available upon request.

### Top fitting

Sealed Cap (gas tight cap)



### Approvals

- Designed in accordance with BS EN ISO-4126-1 &-7
- PED 2014/68/EU (CE)
- PE(S)R UK SI 2016 No. 1105 (UKCA)
- EAC

CE UK EAC

### Seal Materials

This valve using metal to metal sealing. There is a choice of o'ring used for the sealed cap/lever.

O'ring material – Top cap	Temperature Range
Viton® (FKM)	-15°C to +200°C
Nitrile (NBR)	-40°C to +120°C

Standard seal materials shown, others are available.

THESE VALVES SHOULD ONLY BE TESTED FOR SET PRESSURE ON LIQUID PRIOR TO FINAL INSTALLATION. VALVES THAT ARE TESTED ON AIR & FULLY LIFTED WILL CAUSE DAMAGE TO THE SEALING FACE. [RETURN TO CONTENTS PAGE](#)

## Technical information by bore size

Bore size	3.66mm (33110)		3.66mm (34110)		3.66mm (34410)	
	Inlet Size	Outlet Size	Inlet Size	Outlet Size	Inlet Size	Outlet Size
Inlet Size	3/8"	1/2"	3/8"	1/2"	3/8"	1/2"
Outlet Size	3/8"	1/2"	3/8"	1/2"	3/8"	1/2"
Flow Area	10.52mm <sup>2</sup>		10.52mm <sup>2</sup>		10.52mm <sup>2</sup>	
H - Height	92mm		92mm		92mm	
TÜV alloted outflow coefficient	0.73		0.73		0.73	
Weight (approximate) Kg	0.8		0.8		0.8	
Set Pressure range - PED (CE) bar	27 to 36 & 48.3 to 241.3 bar		27 to 36 & 48.3 to 241.3 bar		27 to 36 & 48.3 to 241.3 bar	
Relieving pressure/fully open pressure	Set pressure +10%					
Reseating pressure	Set pressure -10%					

Maximum permissible built up back pressure = 10% of set pressure at or below which flow is not reduced.

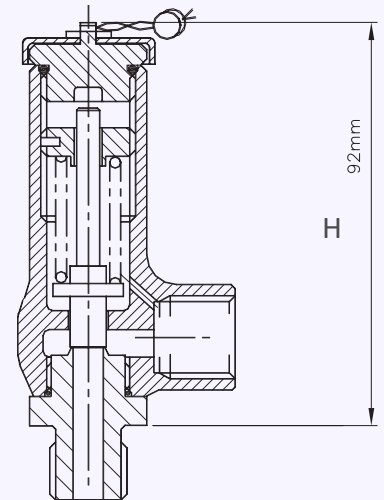
## Standard INLET Connection Types

- BSP parallel male thread
- BSP taper male thread
- NPT male thread

## Standard OUTLET Connection Types

- BSP parallel female thread
- NPT female thread

## Valve Drawing



## Valve Selection Guide

Valve type	Inlet Size	Inlet Thread Type	Outlet Thread Type	Seal Material	Set pressure
33110, 34110 or 34410 (see materials)	Select inlet size from above table	Select Inlet Thread type	Select Outlet Thread type	See table	Set pressure from available range

EAC marking available upon request


**\*Please send your selected details to Seetru and we can provide the full ordering code, price and lead-time.**

## Example of Valve Selection Process

Example Selection	33110	1/2"	BSP parallel	BSP parallel	Viton	100 bar
	Valve Type	Inlet Size	Inlet Thread Type	Outlet Thread Type	Seal Material	Set Pressure

Capacity Table - In accordance with TÜV, AIR at 0°C and 1013mbar. Normal m<sup>3</sup>/hour  
 Type 33110, 34110 and 34410: Flow rates at 10% above the set pressure



Set Pressure			Bore Size (D0)			
			3.66mm			
bar	psi		Nm <sup>3</sup> /Hour			
27	391.5		160.7			
30	435		177.9			
33	478.5		195.2			
36	522		212.5			
48	696		281.5			
50	725		293.0			
60	870.00		350.6			
70	1015		408.1			
80	1160		456.7			
90	1305		523.2			
100	1450		580.8			
150	2175		868.5			
200	2900		1156.2			
241	3494.5		1392.1			

For any intermediate pressures/flows please contact Seetru